



www.litprints.co.uk



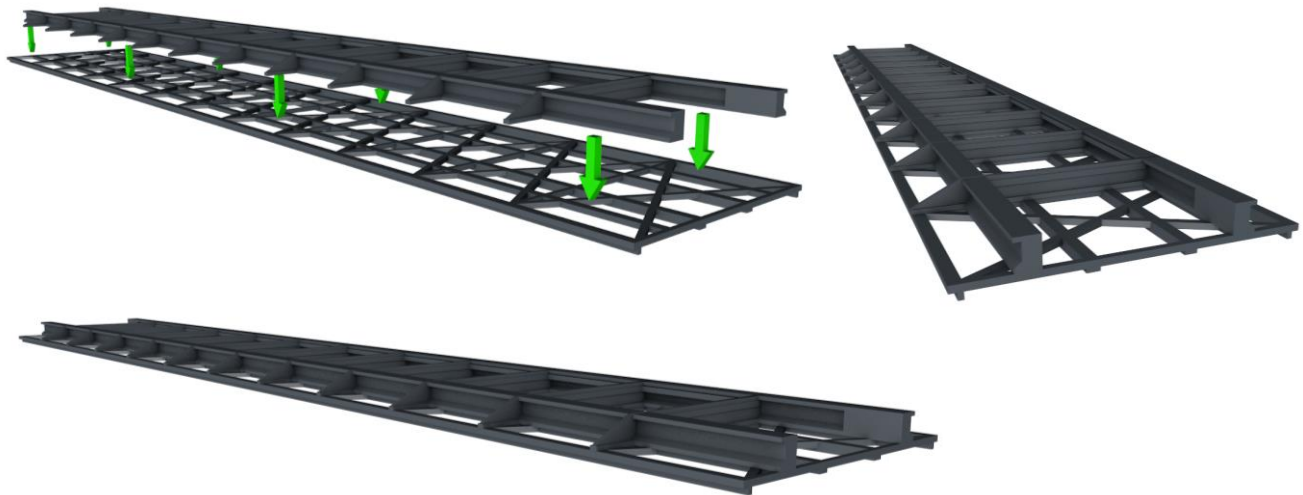
Dear Customer

Thank you for your purchase and interest in our OO Gauge Suspension Bridge Kit. It has been designed to fit together with glue. Use the guide below for assembly.

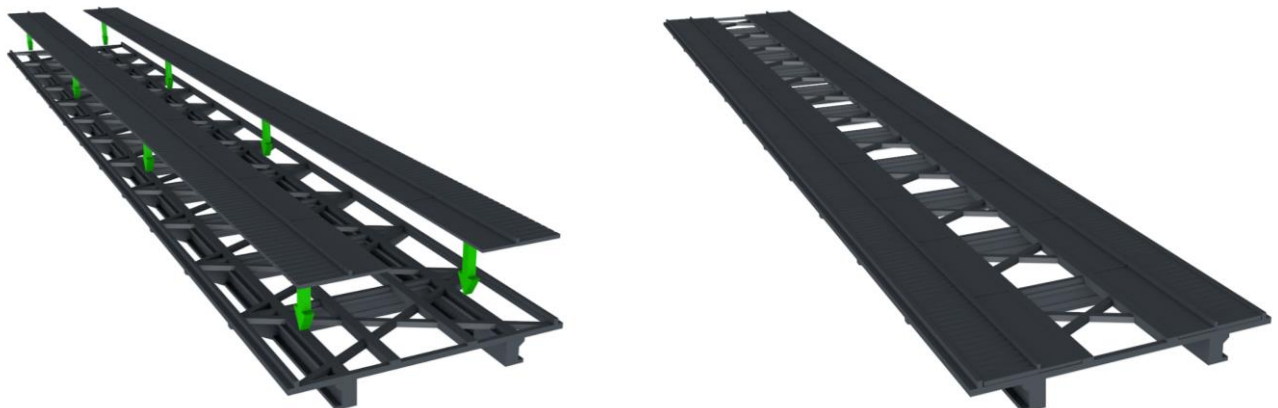
Tools required: glue.

ASSEMBLY INSTRUCTIONS.

- 1) Prepare and check kit. Note: use fast activating glue.
- 2) First glue the foundation truss and base truss together as shown:



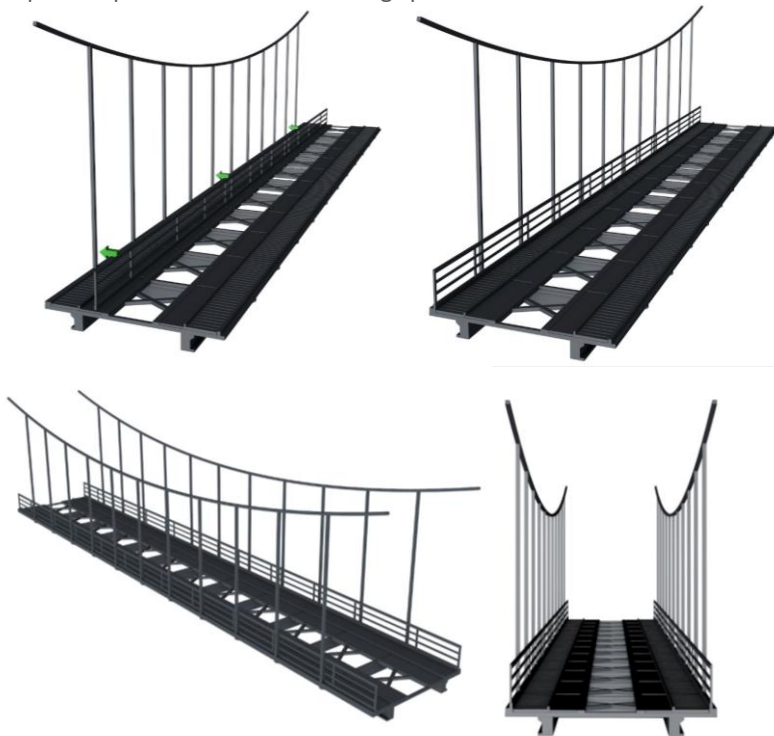
- 3) Now place the walkways and glue them in place as shown:



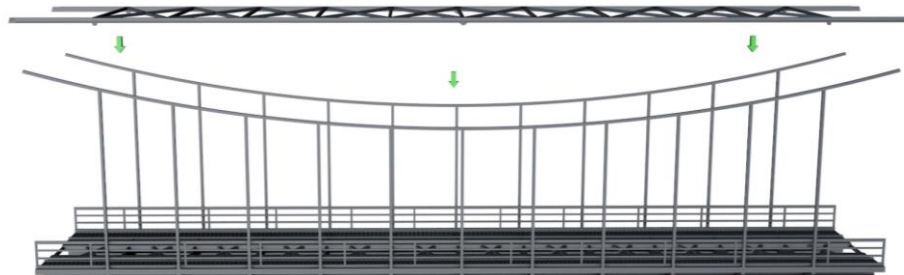
4) Prepare and glue the side trusses in place as shown below, ensure they slot into the grove in the base truss and are level.



5) Add the railings as shown below, Glue in place at each vertical beam on the side trussing as shown below. Once set, add the other side truss, then the railing until the structure looks like the last two images before step 6. Repeat steps for the shorter trussing spans.



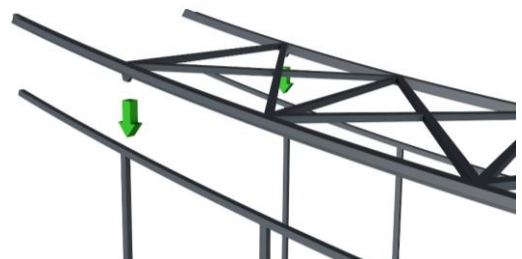
6) Once set, add the top trussing as shown below:



Long span:



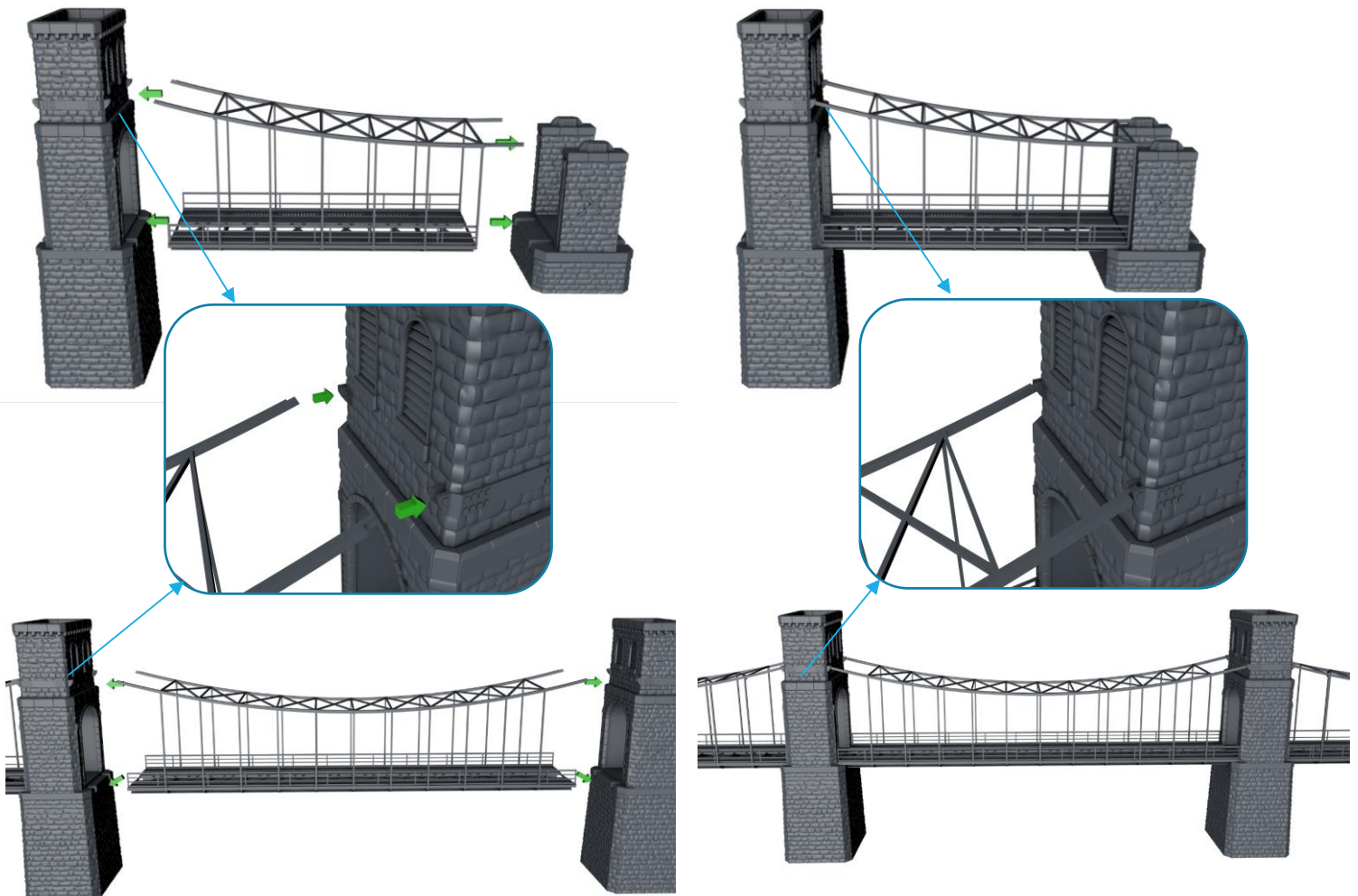
Short Span:



7) Bend the top trussing down into place and glue at these anchor points shown above. Once set, the spans will be complete and look similar to the assemblies below. It is ready to be added to towers and piers.



8) Finally add the spans to the towers and piers as shown below as shown below:



Contents:

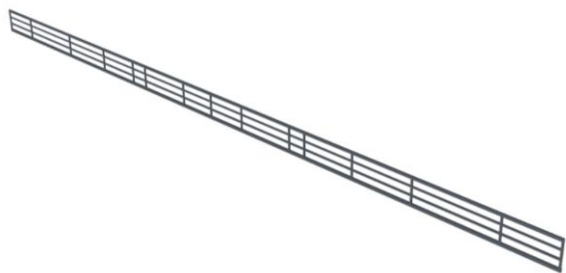
Foundation truss x1



Base truss x1



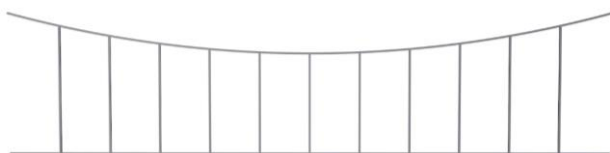
Railings x2



walkway set x1



Side truss x2



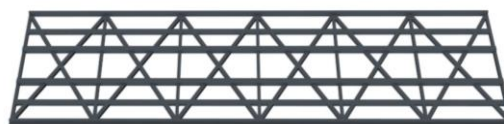
Top truss x1



Short foundation truss x2



Short base truss x2



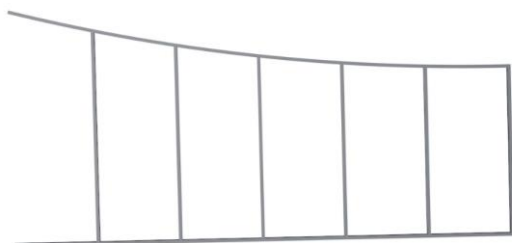
Short railings x4



Short walkway set x2



Short side truss x4



Short top truss x2



Contents:

Tower x2



Pier x2



v

Example of use with terrain:

