



[www.litprints.co.uk](http://www.litprints.co.uk)

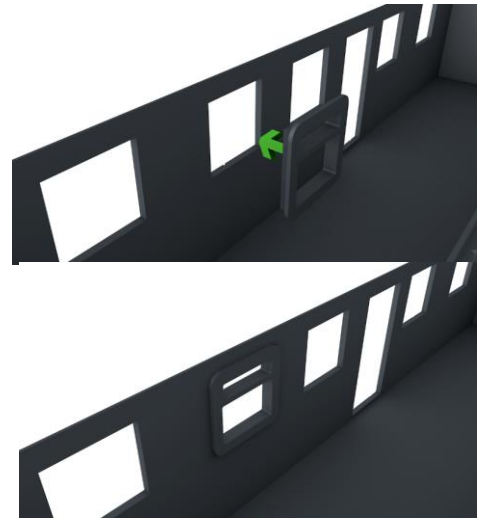
## Dear Customer

Thank you for your purchase and interest in our OO Gauge Portacabin kit. It has been designed to fit together with glue and to be wired for animated look.

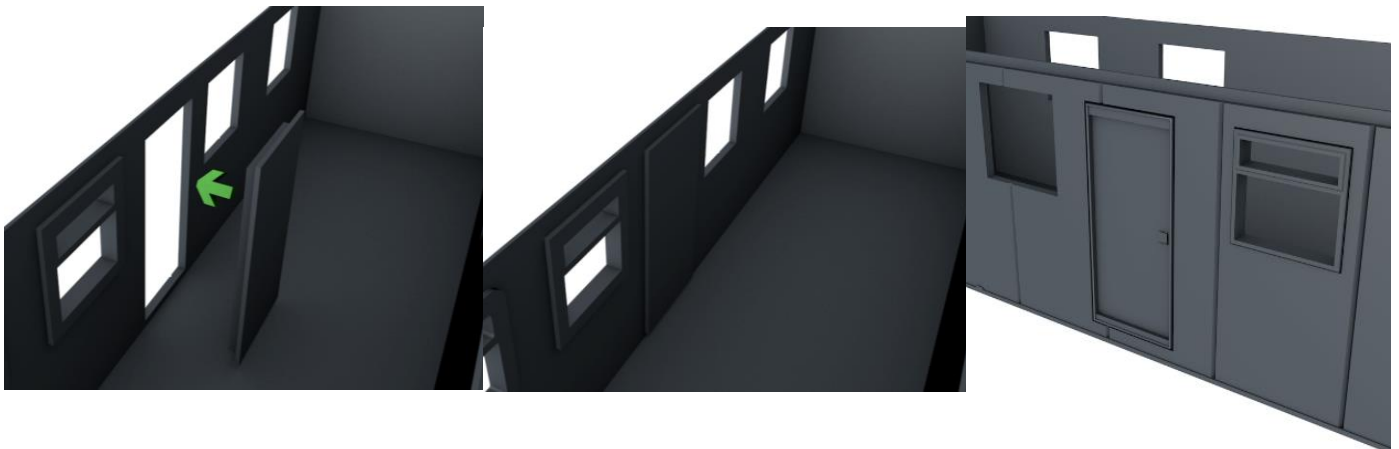
Tools required: Glue

## ASSEMBLY INSTRUCTIONS.

1) First Prepare the Portacabin model. Then pop the windows into the window cutout on the model cabin walls. Glue them if needed. (see images on the left)



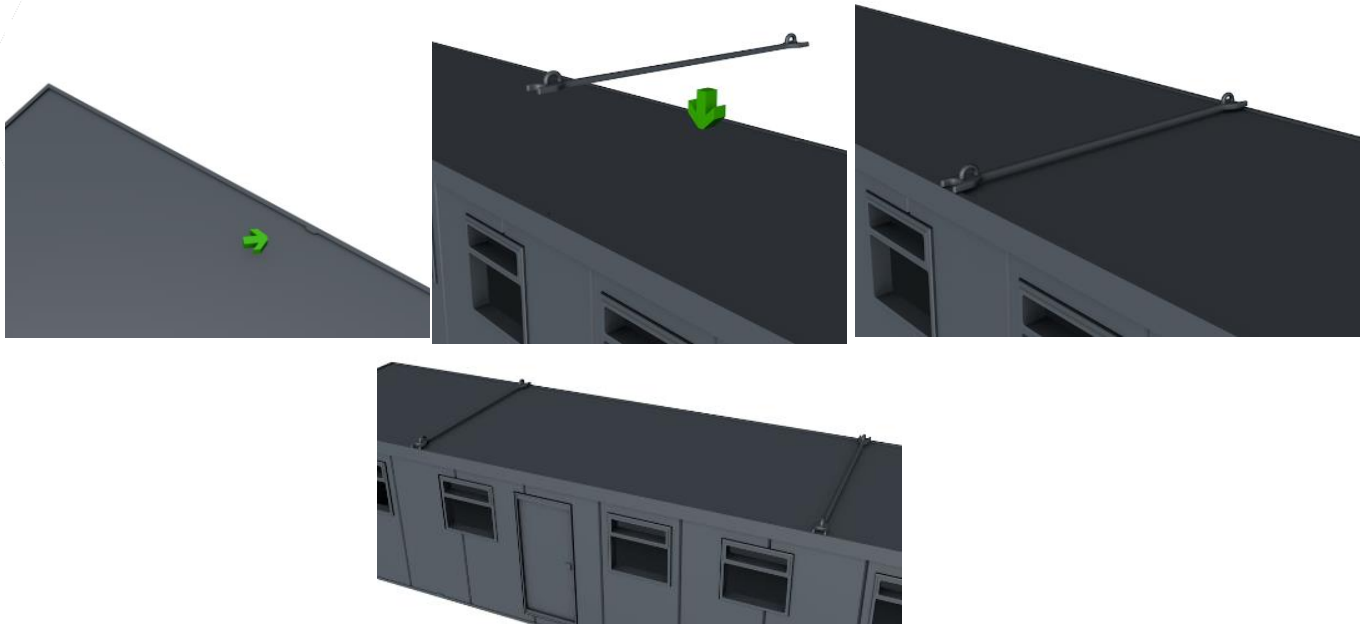
2) Then Pop the doors into the door cutout on the model cabin walls. Glue it if needed. (see images below) Make sure all doors and windows are in place before moving on to the next step.



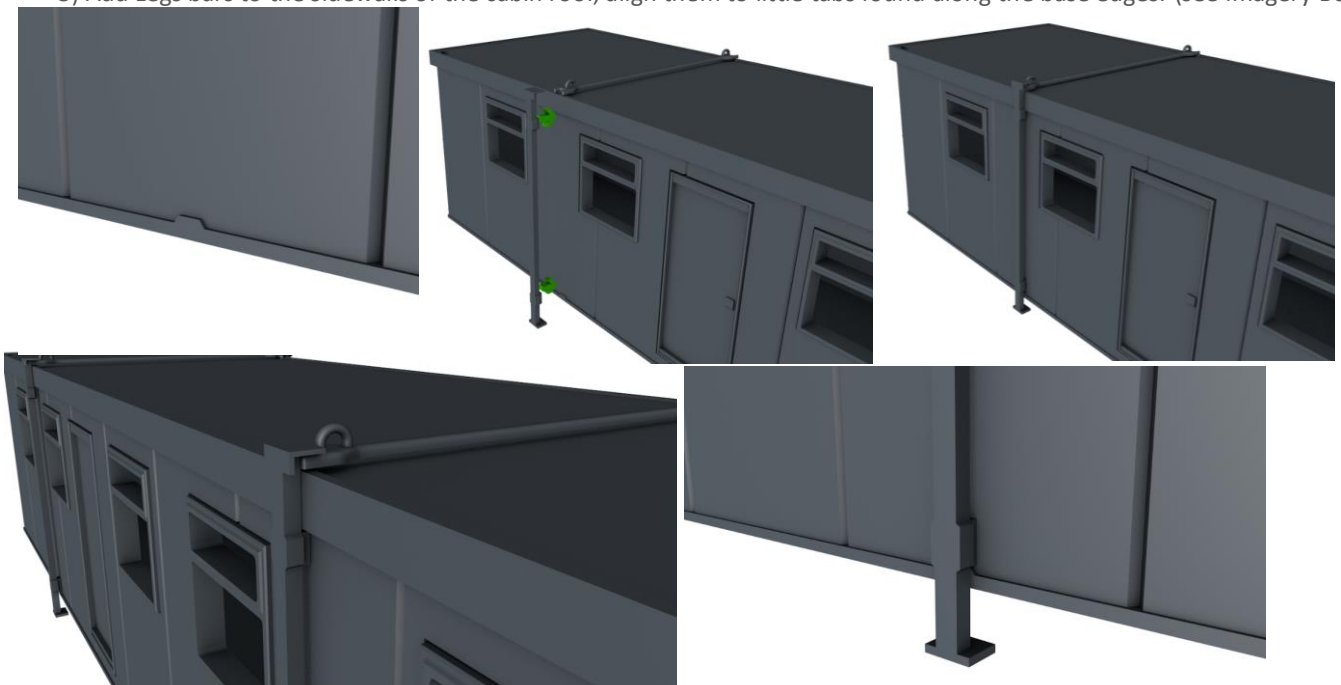
3) Add and internal detailing such as the window glazing before gluing the lid to cabin.



4) Add roof bars to the top of the cabin roof, align them to little tabs found on the roof.



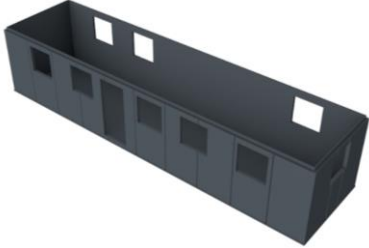
5) Add Legs bars to the sidewalls of the cabin roof, align them to little tabs found along the base edges. (see imagery Below)



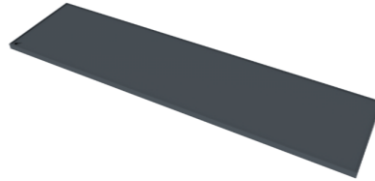
6) Once the set, stack the portacabins on top of each other and add the stairs as pictured in the first main image on page 1

Contents:

Cabin x2



Roof x2



Stairs Set 1



Leg x8



Window x18



Open Door x1



Door x1



Roof Bar x4



*It would be greatly appreciated if you left feedback, this will allow LitPrints to grow and invent new products to improve life quality or aesthetics.*