



www.litprints.co.uk

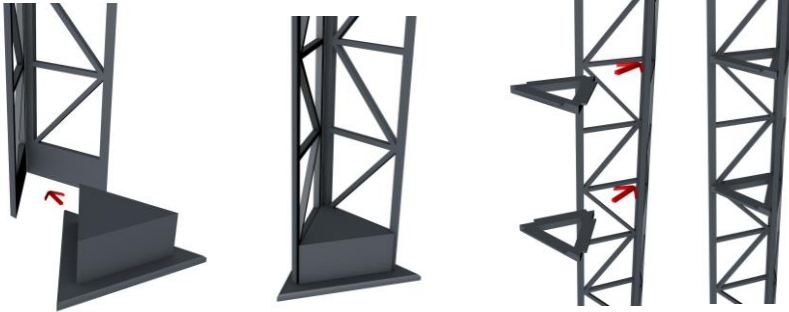
Dear Customer

Thank you for your purchase and interest in our OO Gauge Mobile Mast. It has been designed to fit together with glue and decorated with wire for additional looks. Position the antennas anywhere.

Tools required: glue

ASSEMBLY INSTRUCTIONS.

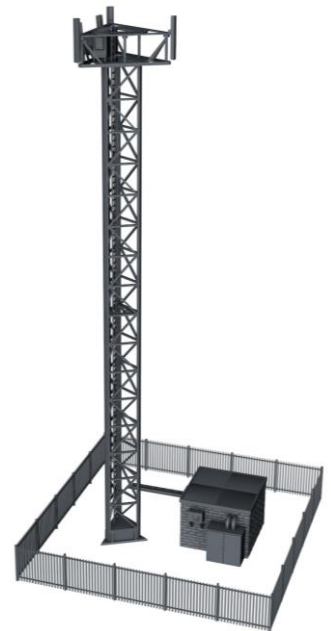
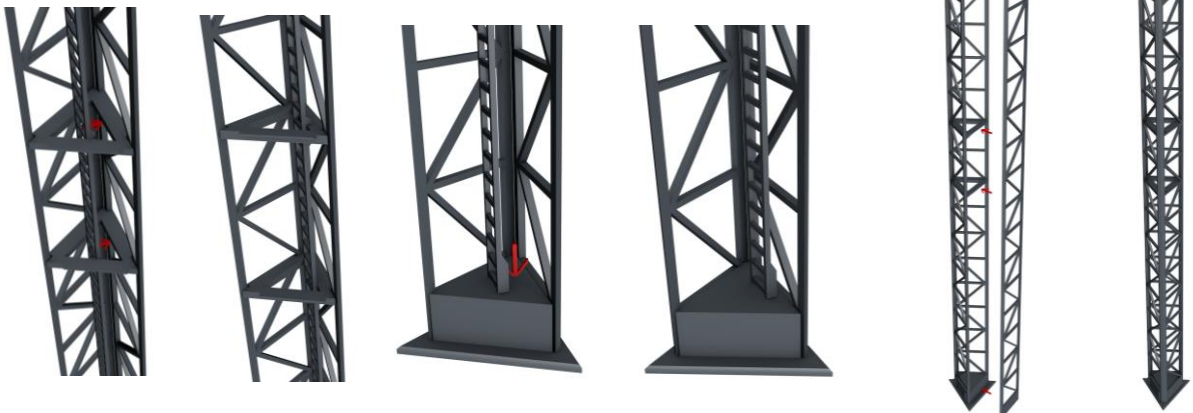
- 1) First glue two truss sections to the truss base and then the mid sections as shown below:



- 2) Then glue the top Joint to the trusses as shown on the right:



- 3) Slot the ladders in making sure they touch the base, then glue them to one side of the model as shown below. Then glue the final truss in place as shown on the right:



4) Add the building lid to the building base and then add the fan model to the building base as shown below:



5) Align and glue the electrical units to the mast cradle, then add the cradle top part as shown below:



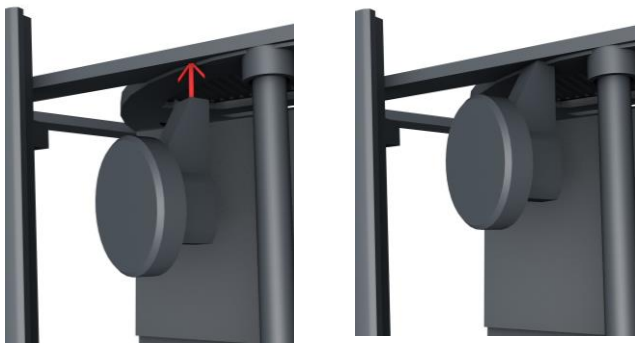
6) Gather and assemble the large & tall antenna, assemble like below and glue to mast cradle points shown below:



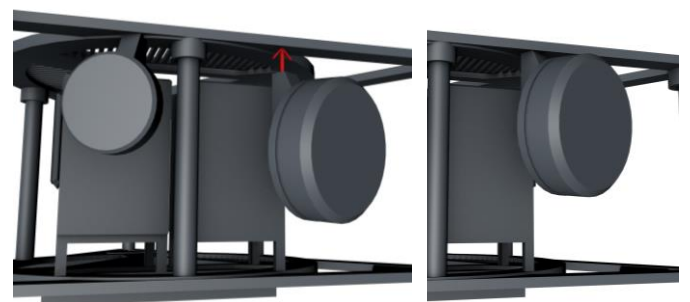
7) Gather and assemble the small & tall antenna, assemble like below and glue to cradle anywhere:



8) Gather and assemble the small dish parts, assemble like below and glue anywhere to mast cradle as shown below:



9) Gather and assemble the large dish parts then assemble like below and glue anywhere to cradle underside.



10) Once all models are ready, add fencing around the model building and mast, adding both the larger access gate and small gate where ever suitable. Heat can be applied to the fencing to make bending easier, once cooled the position will be set.

Contents:

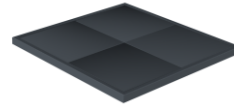
Truss Base x1



Building base x1



Building top x1



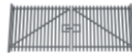
electrical unit x2



Fencing x4



Large gates x1



Small gates x1



ladder x1



Air con x1



Large dish x6



Large tall antenna x3



Large dish x6



v

small tall antenna x6



Mid-section x2



Top Joint x1



Mast cradle top x1



Mast cradle base x1



Truss x3



Any missing part please contact us.