



www.litprints.co.uk

Dear Customer

Thank you for your purchase and interest in our OO Gauge Silo Kit. It has been designed to fit together with glue. Use the guide below for assembly.

Tools required: glue.

ASSEMBLY INSTRUCTIONS.

1) Prepare and check kit. Note: Fast activating glue works best.

2) First glue the frames and truss together as shown on the right:

3) Glue the feeder hopper system to the silo body as shown in (A)

4) Glue the frame to the body as shown in (B) Then glue in locations shown in image (C)



5) Once set, proceed to add the top section as shown below. If you want the silo to contain material such as sand, add this now and leave the model to set. Assembly is complete at this point. Sand adds weight, sand can be removed via the feeder system. Once the model is in place on your scene you can dispense some of the material.



Contents:

Large Frame x2



Small Frame x2



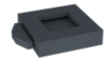
Silo Body x1



Silo Lid x1



Feeder system x1



v



Email support@litprints.co.uk for more information regarding this product.