



www.litprints.co.uk

Contents:

2 ASP Hood



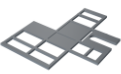
3 ASP Hood



3 ASP Box



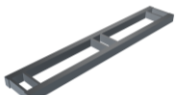
Small Handrails



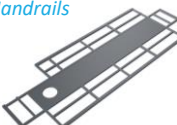
Small Platform



Truss



Large Handrails



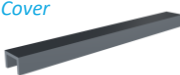
Pole Base



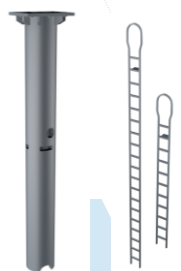
Number Plate



Wire Cover



Pole and ladders x2



X5 LEDs (2 green 2 red 1 yellow) & X7 Thin Cables

Dear Customer

Thank you for your purchase and interest in our OO Gauge 2 Track Signal Gantry kit.

It has been designed to fit together with glue and to be wired for animated look.

This is a UK Type aspect signal that covers two tracks.

Tools required: Dremel, glue, soldering iron, solder

ASSEMBLY INSTRUCTIONS.



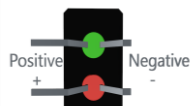
- 1) First prepare the LEDs for soldering and cabling. Use 3 cables for the 2-light system and 4 cables for the 3-light system. See images below for better understanding:



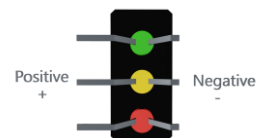
(Slot leds in hood, bend negative prongs together, solder wire on, take now ridged leds out of hood, slot them into 2asp box, then glue hoods onto front of 2asp box.)

Note: Make sure to solder a cable to all the positive Prongs individually. **The long prong on the LED is positive. (3.3-5V only) recommend resistors!**

2ASP:



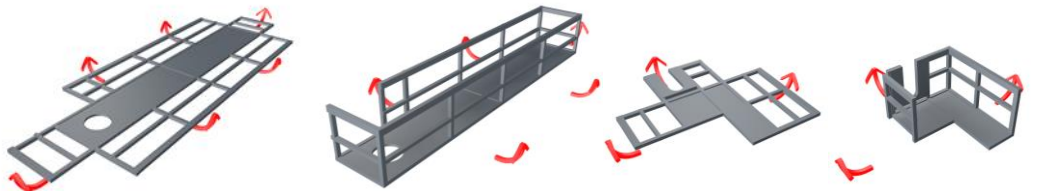
3ASP:



- 2) Feed the cables out from the side of the housing.



- 3) Once LEDS housings have been made prepare the gantry.
- 4) Fold each rail up and glue the rails together: use a ruler along the folding seems to assist. (Note your walkway might differ from the image below, but the principle is the same.)





5) Glue Pole part to truss part, make sure the pole and truss are aligned as shown.

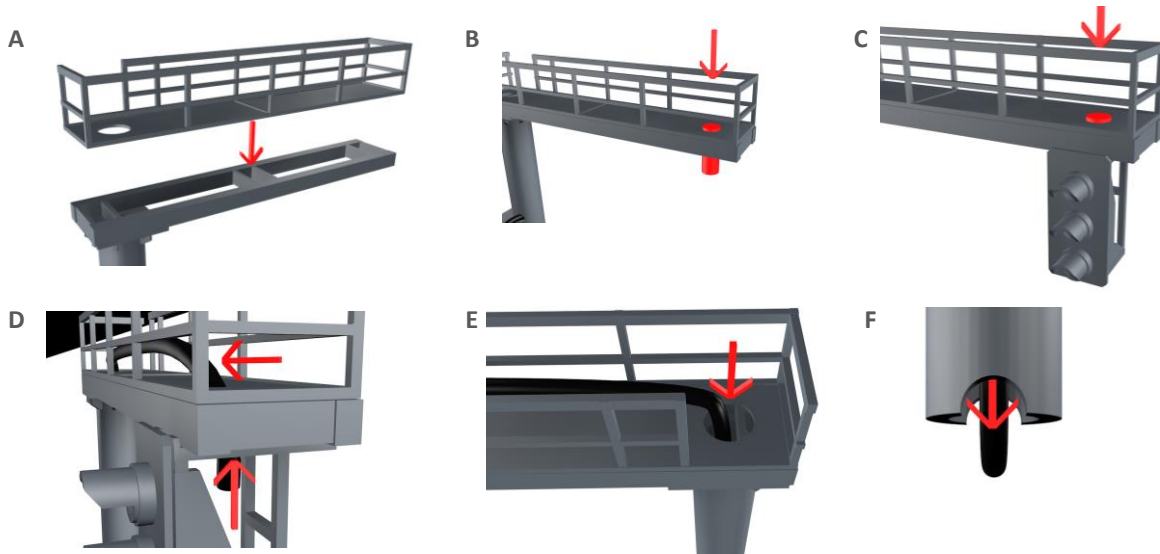
The cable hole and platform slot you see in the 2nd image is the front of the pole, the small handrails and cables for the 2ASP fit here later.

Once aligned glue the pole to the truss.

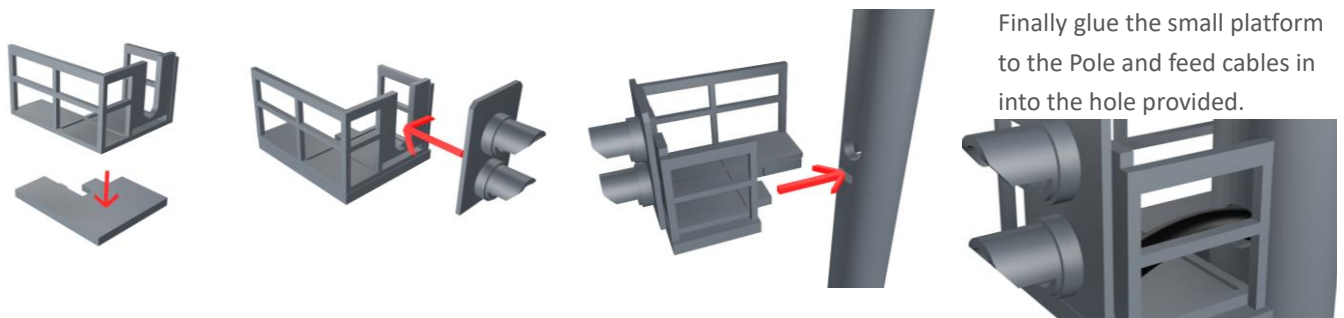
6) Glue large handrails onto top of truss as shown in image A below.

Using a Dremel or small drill, make a hole 2-3mm wide through the large handrail floor to make way for cabling coming from the 3ASP box. See image B below for drill point.

Align and glue the 3ASP box to the truss as shown in image C. Ensure you feed cable through as shown in images D, E & F



7) Glue small handrails to small platform, then glue the 2ASP signal LEDs with hood to the handrails as shown below.



Finally glue the small platform to the Pole and feed cables into the hole provided.

8) Lastly Glue the cable cover as shown, then glue ladders on as shown. (You will need to bend ladder as shown below)



9) Glue pole base on to pole and feed cables under and out from base. Glue the number plate to the pole near base.

Email support@litprints.co.uk for more information regarding this product.