



www.litprints.co.uk

Dear Customer

Thank you for your purchase and interest in our OO Gauge Static Caravan kit. It has been designed to fit together with glue and to be wired for animated look.

This Version has the decking, skirting and gas bottles included.

Tools required: Dremel, glue, soldering iron, solder (for LED cable connection to power)

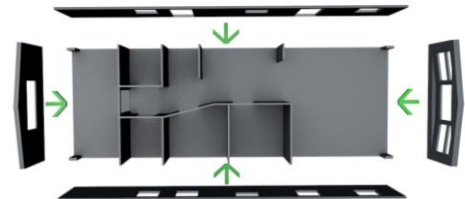


ASSEMBLY INSTRUCTIONS.

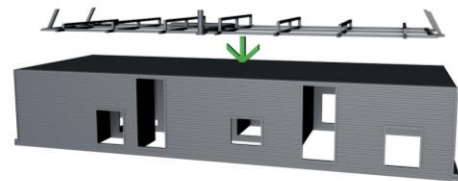
1) First Prepare the caravan front wall windows – glue them onto the front wall. Use tweezers to gently align the windows in place.



2) Then prepare the Caravan base for assembly. Glue only the sides first. This will create rigidity in the base making it easier to glue the other parts together. Ensure alignment is good. Then glue the end wall on.



3) Next align and glue the base frame to the underside of the caravan (image on the right shows the model upside down) Once the frame is in place add the x2 wheels as shown below:



4) It is a good time to test the led and glue it in place somewhere within the caravan model. Use a Dremel or small drill to make a hole in the base for the led cable to run. From here you feed the cable around the underside frame and prepare it for connection to a 12 volt power source later. If your happy with the internals as they are, you can add the roof sections and roof vent now and move onto the next step.

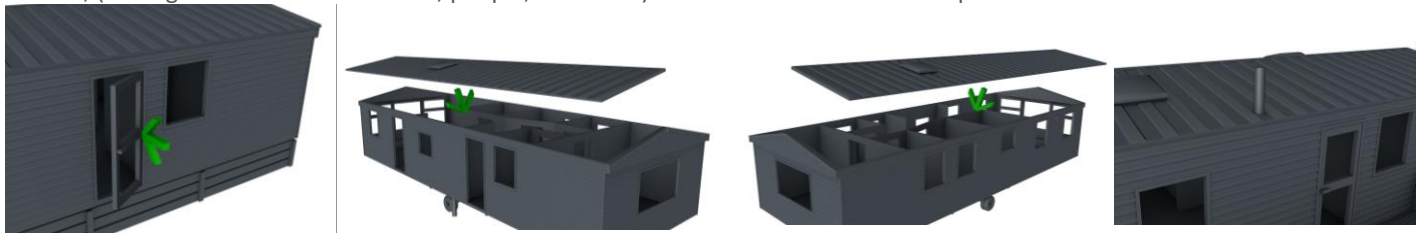
5) Prepare and glue the hitch and wheel, then add to the caravan front as shown:



6) Prepare the underside skirting. Glue in place as shown:



7) Glue the doors in place, You can have them angled open or shut. Also make sure your happy with the internals of the model, (adding extras such as furniture, people, fire extra.) Then add the roof and vent parts as shown:



8) Finally, Prepare the desking parts and glue as shown:

A:



B:

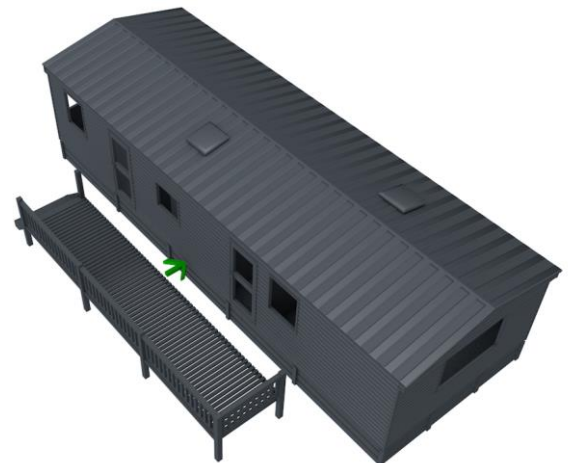


E:

C:



D:



9) Add the gass bottles and finished model to your scene.

Contents:

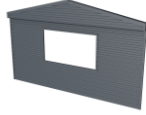
Front wall x1



Window x2



Rear wall x1



side wall (decking side) x1



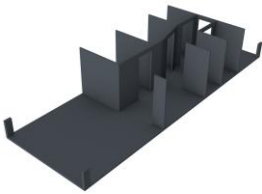
Side wall x1



Door x2



Caravan Base x1



Base frame x1



wheel x2



Hitch wheel x1



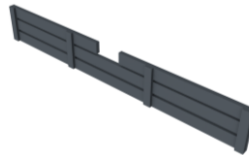
Hitch (tow bar) x1



Under skirt sides x2



Under skirting front



Under skirt rear



Roof 1



Roof 2



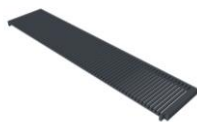
Roof vent



Decking railing x1



Decking base x1



Decking Rail end x1



Decking stairs x1



Decking Pole x1



Gas Bottle x2

