



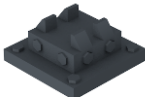
www.litprints.co.uk

Package Contents:
(2 Track configuration)

Wire cants x6



Large feet x4



Small feet x4



Wire tentinoer x6



APT Wire holders x4



Cant holders x6



Legs and supports x4 each



Cell Frame x2



Dear Customer

Thank you for your purchase and interest in our OO Gauge OLE Frames.

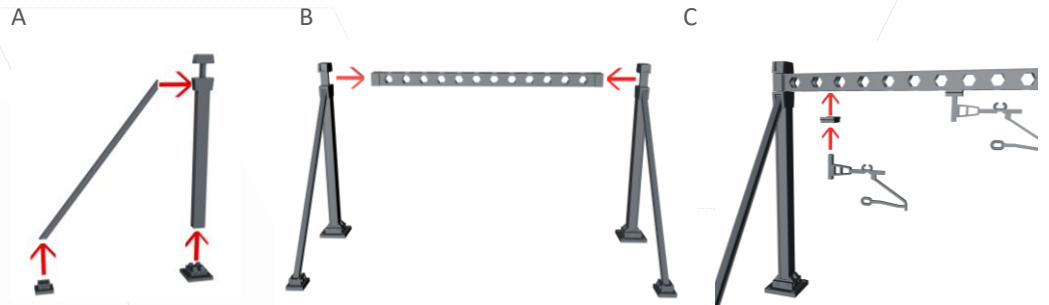
It has been designed to fit together with ease and be wired for a more dense / busy look. Please review the features and see the guide on how to setup the OLE Frames.

ASSEMBLY INSTRUCTIONS.

Assemble parts as shown below: Image A - needs small feet, large feet, leg support and legs. Glue these into place as best as possible. Make sure to complete both legs. Flat/smooth part of the leg to face inwards.

In image B – snap together the legs onto the cell truss and then glue once happy with angle.

In image C – glue the Cant Holders and Cants into place as shown, make sure you're happy with the location as these are not adjustable like with the H frame model.



Mount the wire tensioner to the cell truss in a location offset to the Cants, Its best to leave these off the if no ole overlapping area is present. (Image D)



Finally glue the APT wire holder to the side of the structure. Again, no need to mount if no using an auto transformer model in an overlap section. However, it can make thigs look more details if used. (Image E)

