



www.litprints.co.uk

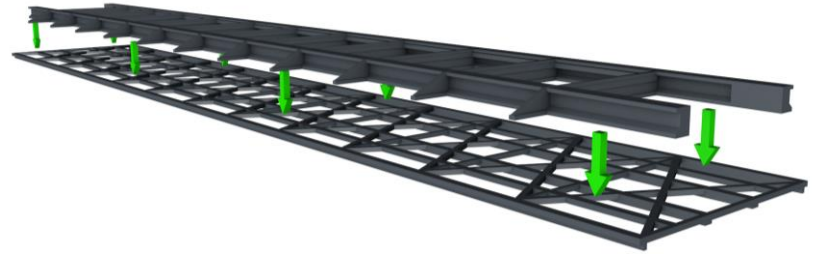


Dear Customer

Thank you for your purchase and interest in our OO Gauge Bridge Kit. It has been designed to fit together with glue. Use the guide below for assembly.

Tools required: glue.

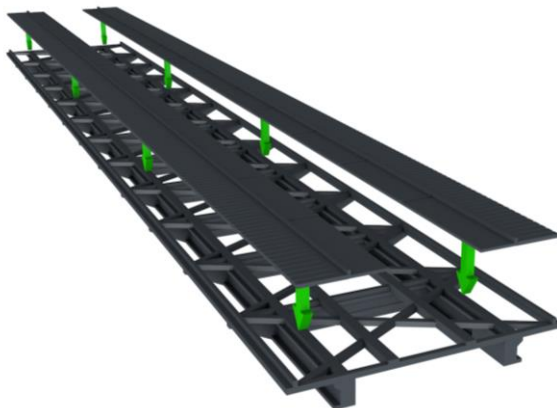
ASSEMBLY INSTRUCTIONS.



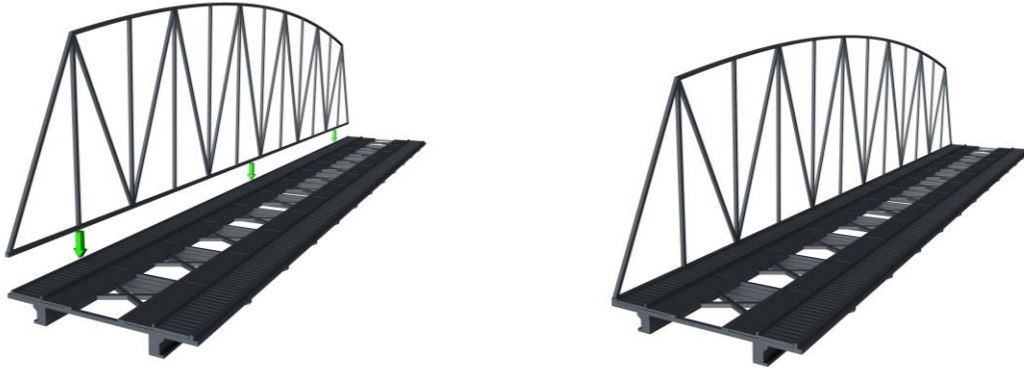
- 1) Prepare and check kit. Note: use fast activating glue.
- 2) First glue the foundation truss and base truss together as shown:



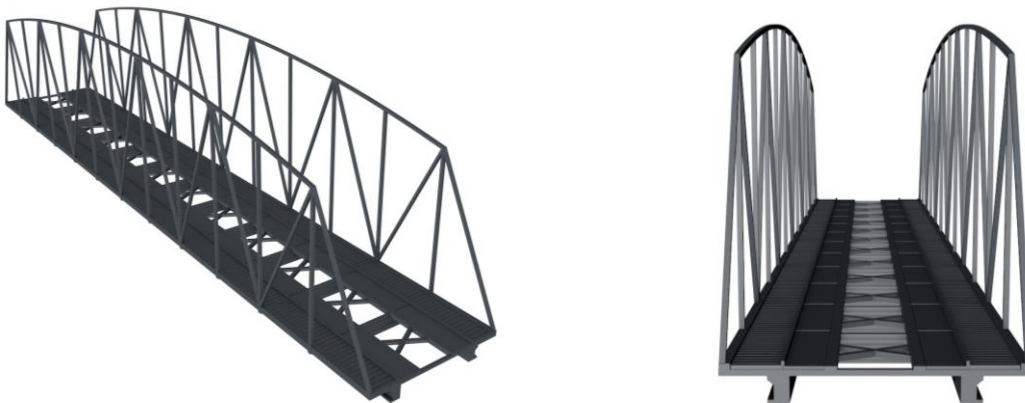
- 3) Now place the walkways and glue them in place as shown:



4) Prepare and glue the side trusses in place as shown below, ensure they slot into the groove in the base truss and are level.

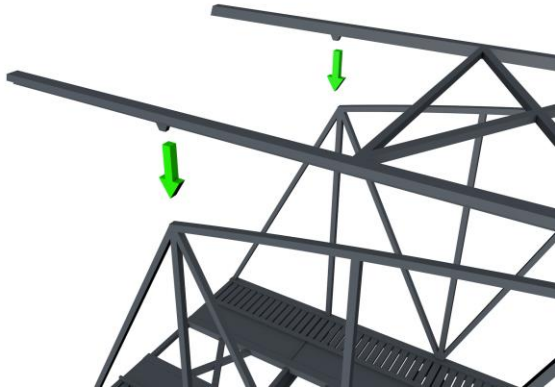


5) Add the railings as shown below, Glue in place at each vertical beam on the side trussing as shown below:
Once set, add the other side



6) Once set, add the top trussing as shown below:

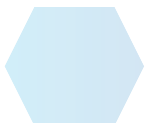
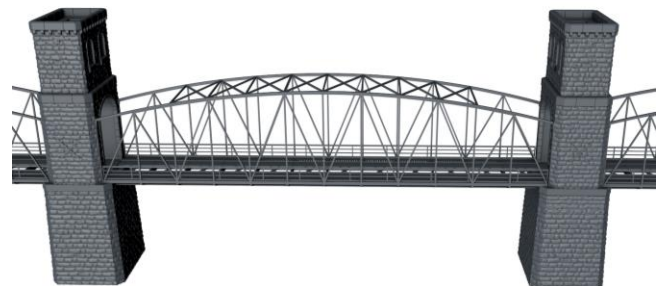




5) Bend the top trussing down into place and glue at these anchor points shown above. Once set the span will be complete and look similar to the assembly below. It is ready to be added to towers and piers.



6) Finally add the spans to the towers and piers as shown below as shown below:

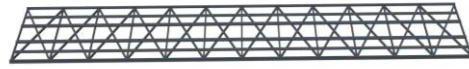


Contents:

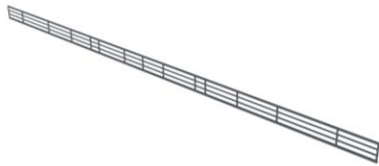
Foundation truss x3



Base truss x3



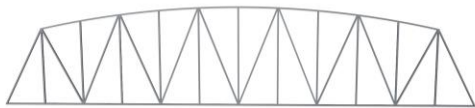
Railings x6



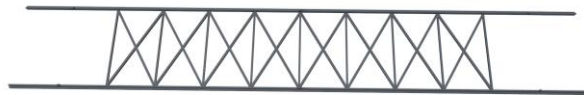
walkway set x3



Side truss x6



Top truss x3



Tower x2



Pier x2

